



**Cold Higham**



**Pattishall**

# **Walks**

between

# **Four Churches**



**Tiffield**



**Gayton**

*PRICE £1*  
*All proceeds to the Church*

# WALKS BETWEEN FOUR CHURCHES

## FOREWORD

This booklet describes four walking routes using the footpaths, bridleways and lanes that connect the four churches in the Benefice of Pattishall, Gayton, Tiffield and Cold Higham. The first walk includes all four churches and is just over seven miles long. The other three are shorter and include two or three of the churches.

These routes could be used by walkers taking part in the annual, national Sponsored Ride & Stride event, which takes place on the second Saturday in September each year. In our county it is organised by the Northamptonshire Historic Churches Trust, founded in 1955 with the object of raising funds to make grants to churches of all denominations in Northamptonshire for their “preservation, repair and maintenance, improvement, upkeep, beautification and reconstruction.”

People of any age can take part in the Ride & Stride, as you can choose your own route, according to how many churches you wish to visit on the day. Half of the money you raise from sponsorship goes to the church of your choice and the other half goes to the Trust. To find out more about the Sponsored Ride & Stride go to [www.nhct.org.uk](http://www.nhct.org.uk) .

My thanks to my wife Wendy for the fine hand drawn maps and to my fellow members of “Gayton Walkers” for accompanying me along these routes. I hope you enjoy them as much as we have. Not only will you visit four really interesting and historic churches, you will also enjoy some magnificent views across the beautiful unspoilt South Northamptonshire countryside.

Barry Steer, Gayton, July 2011.

## Contents

1. Four Churches Walk: Gayton, Tiffield, Cold Higham, Pattishall and back..... 7.2 miles.
2. Tiffield Church to Gayton Church and back..... 4.2 miles.
3. Pattishall Church to Tiffield Church to Cold Higham Church and back..... 5.5 miles
4. Cold Higham Church to Pattishall Church to Gayton Church and back....5.3 miles.



**Cold Higham**



**Pattishall**



**Tiffield**



**Gayton**

## 1. FOUR CHURCHES WALK, GAYTON, TIFFFIELD, COLD HIGHAM, PATTISHALL, 7.2 miles

Start at Gayton Church. Walk along Blisworth Road to Britain Cottages and take the footpath on the right immediately after the cottages. The path goes between the end cottage and a paddock up to a stile, then along the left edge of a field, with the embankment of the dismantled railway on the left. At the top corner of the field the path vanishes into the trees and ends at the junction of another footpath.

Go right on this path, between wooden fences to the back of Gayton Wilds house, where you emerge onto a wide track. Go left on the track to Tiffield Road and left on the road. Walk along the road as far as the bridge over the dismantled railway. Leave the road and go through the wooden swing gate on the right into Tiffield Pocket Park. Go down the steps, turn right at the bottom and follow the path to Tiffield. Leave the Pocket Park through a gate on the left leading out onto the playing field. Cross the playing field, turn left on Gayton Road, then right on the road that leads through the village down to the Church.

Retrace your steps to Meadow Rise, the second road on the left. Walk along Meadow Rise and take the footpath on the left, leading up steps to a stile and onto the dismantled railway. Cross the track and cross the meadow, heading NW, up to a stile that brings you out onto Gayton Road. Continue in the same direction along the road past The Folly on the left.

You leave the road where it turns right and go left on a wide track, (there is a bridleway finger post) past a Cattery up to the wide metal gate leading into stables. At this point the bridleway, still a wide track, goes right, now heading west. After about 200 yards, the bridleway splits into two, the track bears left, but you go through a farm gate on the right and turn left, still heading west and following the left edge of a field with a hedge on the left. At the end of the field go through a gate into the next field and continue with the hedge on the left and a fence on the right. You walk under HT cables, running north to south and continue to the next field where you have a hedge to the left and right. At the end of this field you go through a farm gate and continue across the next field, following the left edge. On the other side you go through another farm gate and onto

a hard wide track, which you follow for about two thirds of a mile until it comes out onto High St. Ascote.



Bridleway to Ascote.

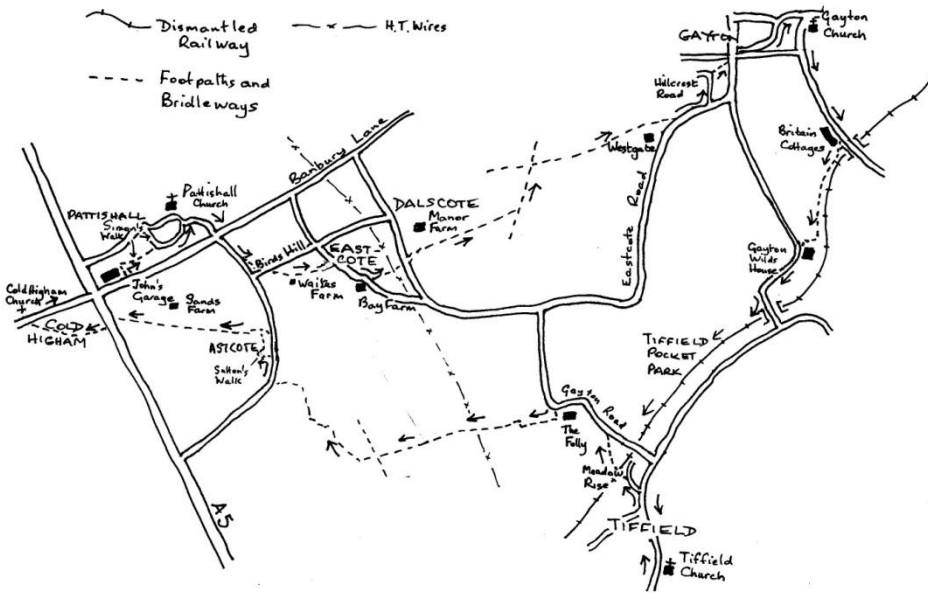


Distant view of Ascote from Bridleway

Turn right and follow the road through the village to the footpath on the left known as Sutton's Walk. It begins as a wide track between houses and leads up to a wooden gate. After the gate you walk on a narrow grassy path that, skirts around a garden, with a tall hedge to the right and a fence and paddock to the left. After walking round three sides of the garden, cross a stile on the left then cross a paddock to another stile, and follow the narrow path between 2 fences. You go through a narrow gate on the left and cross a pasture following a garden fence on the right. You cross a stile set in the opposite fence. Go right and follow the edge of the field with the hedge on the right to a footbridge and stile. Cross over and continue with the hedge now on the left. Go through a gap in the facing hedge and continue following the hedge along the southern edge of the field to the corner, then follow the western edge to the end of the hedge, where you bear left and cross the field now heading NW. Cross the stile into the next field, bear a few degrees left and cross to the A5 at the entrance to the drive to Sands Farm.

Turn left on the A5, walk a few yards down and cross to a footpath heading west to Cold Higham. Go through a farm gate or over a stile into the field and follow the hedge on the right to a stile. Cross it and bear right, crossing the next field to a double stile into another field. Cross to a gate which leads to a path between houses and out onto Banbury Lane. Cold Higham church is a short distance to the left on the opposite side of the road.





After visiting the church, go back along Banbury Lane to the A5 at Foster's Booth. Cross the A5 and walk down Banbury Lane, past John's Garage. After the garage turn left on Simon's Walk, a footpath that leads up to a road, also called Simon's Walk. Go right on the road to no. 55, opposite Valley End and go left up a footpath between the houses. At the end of the garden fence, go right and follow the path past a cemetery on the left and out onto Church St. Go right and follow the road round to Pattishall Church.

From the church, walk downhill to Banbury Lane. Cross and walk uphill towards Ascote. Just before the junction with Birds Hill, the road to Eastcote, cut off the corner by taking the footpath on the left. Cross Birds Hill and go over a stile, continuing on the footpath, which goes downhill across a grassy pasture to a footbridge then uphill past the buildings of Waites Farm on the right. At the top of the hill you reach the houses of Eastcote. The footpath goes right, and emerges in 'The Close' which leads out onto the main road through the village. Go right on the road as far as Bay Farm where you take the footpath on the left leading to Dalscote.

This path takes you between houses and across a field, passing under the HT cables. At Dalscote cross the road and continue on the footpath, going over the stile beside the lane down to the farm. Cross the small grassy field and climb over another stile, passing farm buildings and a small aircraft hangar. Continue straight on for about 200 yards, going gently downhill across the grassy field, and then pass through a gate in the hedgerow. Take the path diagonally left for about 150 yards across the next field, and climb over the stile in the hedgerow.

Going in the same direction, but bearing right and following the stream on your left, cross it over a wooden bridge after about a quarter mile, and continue walking close to the stream and trees, now on your right.

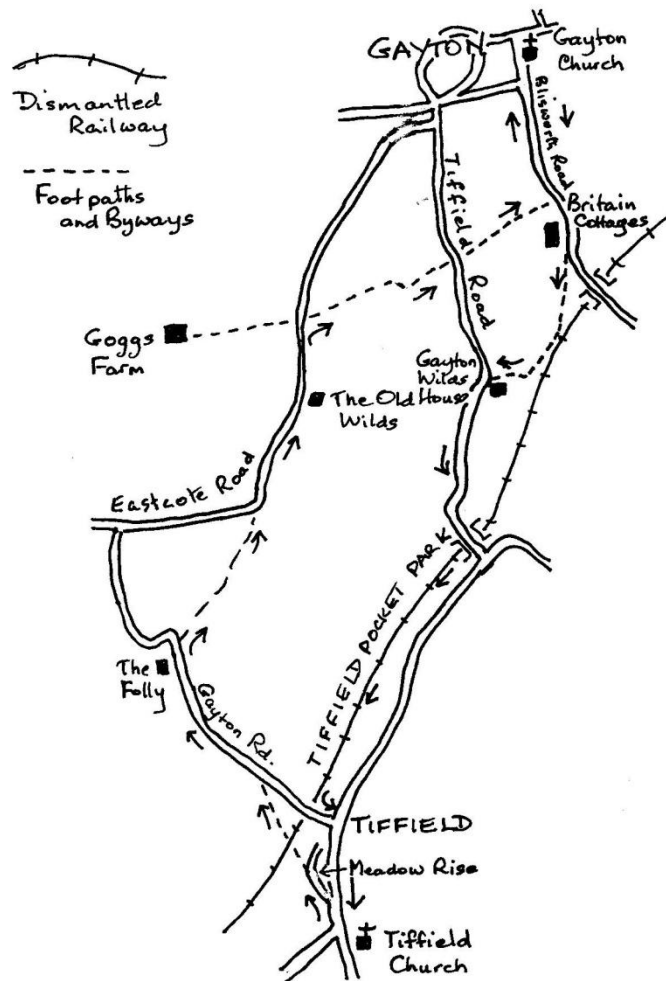
Within a quarter mile, you reach the junction with the bridleway that goes right over a wide wooden bridge. Cross the bridge and follow the bridleway up a steep slope and across to the gated opening at Eastcote Road. From there, turn left and walk back to Gayton Church, via Hillcrest Road, the village green, Fiveways and Baker St.



Fiveways at Gayton.

## 2. TIFFFIELD CHURCH TO GAYTON AND BACK, 4.2 miles

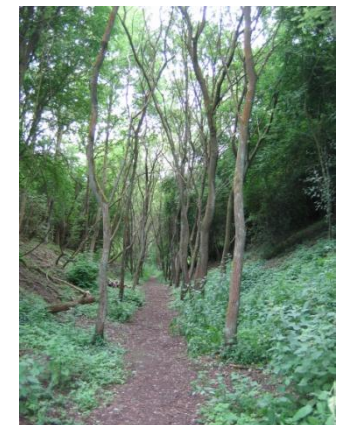
Start at Tiffield Church and walk up the road in the direction of Gayton to Meadow Rise, the second road on the left. Walk along Meadow Rise and take the footpath on the left, leading up steps to a stile and onto the dismantled railway. Cross the track and cross the meadow, heading NW, up to a stile that brings you out onto Gayton Road. Continue in the same direction along the road past The Folly on the left.



Where the road bends left, go straight ahead on a Byway that cuts through to Eastcote Road. Walk along Eastcote Road towards Gayton. Pass the Old Wilds on the right and take the footpath on the right, opposite the drive to Goggs Farm on the left. Follow the footpath across to Tiffield Road. Cross Tiffield Road and continue on the footpath to Blisworth Road. Go left on Blisworth Road to Gayton Church.

After visiting the Church, walk along Blisworth Road to Britain Cottages and take the footpath on the right immediately after the cottages. The path goes between the end cottage and a paddock up to a stile, then along the left edge of a field, with the embankment of the dismantled railway on the left. At the top corner of the field the path vanishes into the trees and ends at the junction of another footpath.

Go right on this path, between wooden fences to the back of Gayton Wilds house, where you emerge onto a wide track. Go left on the track to Tiffield Road and left on the road. Walk along the road as far as the bridge over the dismantled railway. Leave the road and go through the wooden swing gate on the right into Tiffield Pocket Park. Go down the steps, turn right at the bottom and follow the path to Tiffield. Leave the Pocket Park through a gate on the left leading out onto the playing field. Cross the playing field, turn left on Gayton Road, then right on the road that leads through the village back down to the Church.

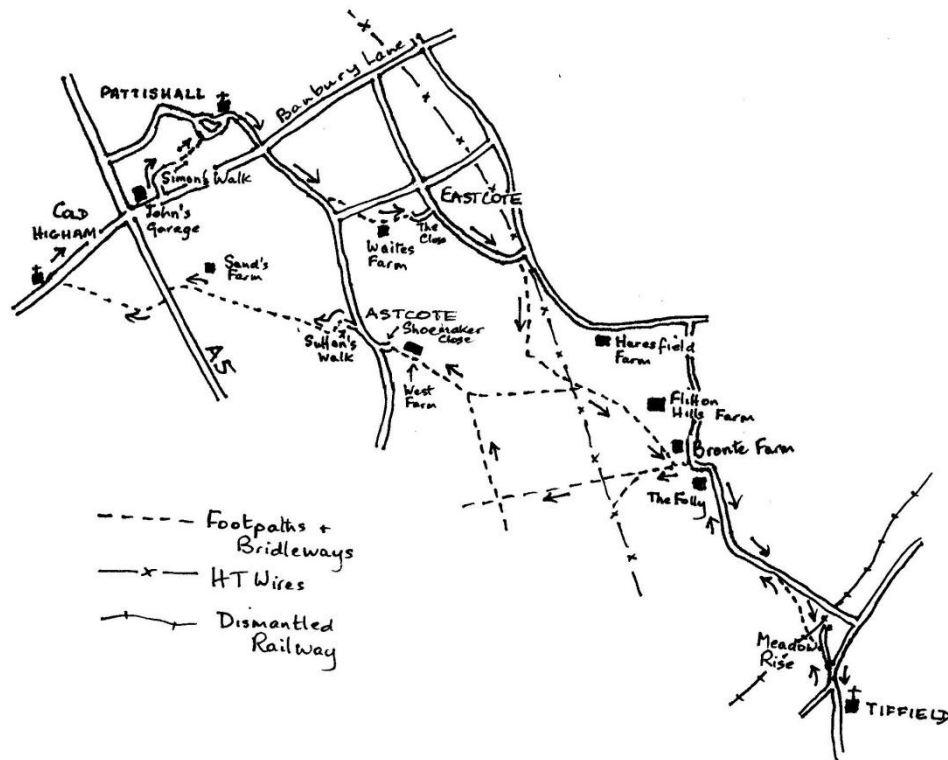


Tiffield Pocket Park



### 3. PATTISHALL CHURCH TO TIFFIELD TO COLD HIGHAM AND BACK 5.5 miles

Start at Pattishall church, walk downhill to Banbury Lane. Cross and walk uphill towards Ascote. Just before the junction with Birds Hill, the road to Eastcote, cut off the corner by taking the footpath on the left. Cross Birds Hill and go over a stile, continuing on the footpath, which goes downhill across a grassy pasture to a footbridge then uphill past the buildings of Waites Farm on the right. At the top of the hill you reach the houses of Eastcote. The footpath goes right, and emerges in 'The Close' which leads out onto the main road through the village.



Go right on the road and walk through Eastcote. After leaving the village, continue along Gayton Road and take the footpath on the right, before the road junction. Go over a stile into a field and follow the left edge of the field with the hedge and beyond that the road on your left. Where the hedge bears left near the top end of the field, cross to the opposite corner,

where there is a gap in the hedge and a stile right underneath the HT cables. Go over the stile and a second stile and out onto a drive. Cross the drive to a footpath marker post and follow the footpath along the left edge of the field, with a hedge on your left, heading due south. You are still under the HT cables. At the end of the field go left through a gap in the hedge onto a hard track, which you cross and go through a gap in the fence into a field. Cross the field heading SE, walk under the HT cables, there are farm buildings away to the left. On the far side of the field, go through a gap in the fence and cross the corner of the next field to another gap. Continue in the same direction to the far corner of the next field to a footbridge and stile and cross again to the far corner, to a stile set in a high hedge.



Footpath gate into Paddocks at Bronte Farm.

Go through the hedge to a gate that leads you into the paddocks of Bronte Farm. Cross the first paddock to a gate and onto a drive. Follow the drive a short way to a wide farm gate. Do not go through the farm gate, turn left down to a narrow wooden gate. It leads onto a wide concrete drive and the road to Tiffield.

Turn right on the road and walk down to the footpath sign on the right. Go over the stile and cross the meadow, heading SE down to the dismantled railway line. Cross it to a stile and steps that lead down into Meadow Rise. From here, walk down to the High Street. Turn right and walk down to Tiffield Church.

After visiting the church, retrace your steps along the same route as described above, up the High Street to Meadow Rise, the second road on the left, along Meadow Rise to the footpath on the left, leading up steps to a stile and onto the dismantled railway. Cross the track and cross the meadow, heading NW, up to the stile and out onto Gayton Road. Continue in the same direction along the road past The Folly on the left.

You leave the road where it turns right and go left on a wide track, (there is a bridleway finger post) past a Cattery up to the wide metal gate leading into stables. At this point the bridleway, still a wide track, goes right, now heading west. After about 200 yards, the bridleway splits into two, the track bears left, but you go through a farm gate on the right and turn left, still heading west and following the left edge of a field with a hedge on the left. At the end of the field go through a gate into the next field and continue with the hedge on the left and a fence on the right. You walk under HT cables, running north to south and continue to the next field where you have a hedge to the left and right. At the end of this field you go through a farm gate and leave the bridleway, turning right on a footpath that heads almost due north.



Footpath to Astcote.

From this high vantage point there are good views of the distant countryside and not far away to the NW are the houses of Astcote. Cross the stile and continue straight ahead across the field to another stile set in the hedge. Cross the stile and bear left, following the left edge of the field with the hedge on the left. At the bottom of the field you cross a stile and walk across the left edge of a meadow to a farm gate. Continue in the same direction with the buildings of West Farm to the right. You cross two stiles as you pass the farm buildings, the second one leads onto a concrete farm yard and then a drive that comes out on Shoemaker Close. Walk along this road down to the High St. in Astcote.

The path follows the right edge of the field with a hedge on the right. At the top of the field you cross a stile, set in the facing hedge and continue in the same direction following the right edge of the next field. Towards the top of the field you walk away from the hedge, around the left of a clump of trees, up to another stile. From this high

Go right on the High St. and cross to Sutton's Walk on the left. Walk up to the end and turn left on a hard track that goes uphill with houses on the left. You come to a narrow footpath and immediately turn right through a narrow gate leading into a pasture. Cross it, following a garden fence on the right to a stile set in the opposite fence. Cross the stile and go right, following the edge of the field with the hedge on the right, up to a footbridge and stile set in the hedge. Cross over and continue with the hedge now on the left. Go through a gap in the facing hedge and continue following the hedge along the southern edge of the field to the corner, then follow the western edge to the end of the hedge, where you bear left and cross the field now heading NW. Cross the stile into the next field, bear a few degrees left and cross to the A5 at the entrance to the drive to Sands Farm.

Turn left on the A5, walk a few yards down and cross to a footpath heading west to Cold Higham. Go through a farm gate or over a stile into the field and follow the hedge on the right to a stile. Cross it and bear right, crossing the next field to a double stile into another field. Cross to a gate which leads to a path between houses and out onto Banbury Lane. Cold Higham church is a short distance to the left on the opposite side of the road.

After visiting the church, go back along Banbury Lane to the A5 at Foster's Booth. Cross the A5 and walk down Banbury Lane, past John's Garage. After the garage turn left on Simon's Walk, a footpath that leads up to a road, also called Simon's Walk. Go right on the road to no. 55, opposite Valley End and go left up a footpath between the houses. At the end of the garden fence, go right and follow the path past a cemetery on the left and out onto Church St. Go right and follow the road round to Pattishall Church.



Footpath through Bronte Farm.

#### 4. COLD HIGHAM CHURCH TO PATTISHALL TO GAYTON AND BACK 5.3 miles

Start at Cold Higham church and go left down Church Lane, a cul-de-sac. At the end of the lane, continue over grass for about 25 yards and go right on a footpath, heading east.



Footpath at Church Lane, Cold Higham.



View from Footpath at Cold Higham.

Cross a stile and follow the right edge of the field to a stile. Walk past the stile and cross the next field to a stile and cross to the far corner of the next field down to a stile leading out onto Banbury Lane.

Walk down to the A5, cross and walk down Banbury Lane, past John's Garage. After the garage turn left on Simon's Walk, a footpath that leads up to a road, also called Simon's Walk. Go right on the road to no. 55, opposite Valley End and go left up a footpath between the houses. At the end of the garden fence, go right and follow the path past a cemetery on the left and out onto Church St. Go right and follow the road round to Pattishall Church.

From the church, walk downhill to Banbury Lane. Cross it and walk uphill towards Ascote. Just before the junction with Birds Hill, the road to Eastcote, cut off the corner by taking the footpath on the left. Cross Birds Hill and go over a stile, continuing on the footpath, which goes downhill across a grassy pasture to a footbridge then uphill past the buildings of Waites Farm on the right. At the top of the hill you reach the houses of Eastcote. The footpath goes right, and emerges in 'The Close' which leads out onto the main road through the village. Go right on the

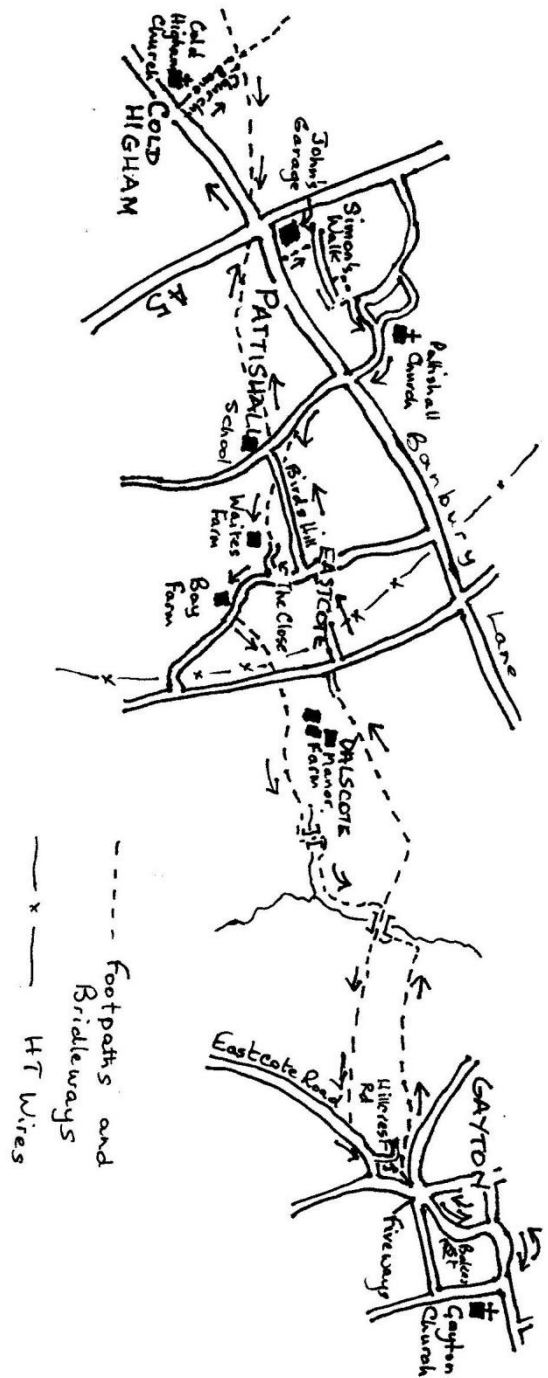
road as far as Bay Farm where you take the footpath on the left leading to Dalscote.

This path takes you between houses and across a field, passing under the HT cables. At Dalscote cross the road and continue on the footpath, going over the stile beside the lane down to the farm. Cross the small grassy field and climb over another stile, passing farm buildings and a small aircraft hangar. Continue straight on for about 200 yards, going gently downhill across the grassy field, and then pass through a gate in the hedgerow. Take the path diagonally left for about 150 yards across the next field, and climb over the stile in the hedgerow. Going in the same direction, but bearing right and following the stream on your left, cross it over a wooden bridge after about a quarter mile, and continue walking close to the stream and trees, now on your right.

Within a quarter mile, you reach the junction with the bridleway that goes right over a wide wooden bridge. Cross the bridge and follow the bridleway up a steep slope and across to the gated opening at Eastcote Road. From there, turn left and walk to Gayton Church, via Hillcrest Road, the village green, Fiveways and Baker St.

After visiting the Church walk along Spring Orchard and up Baker Street to Fiveways and onto the village green. Follow the tarmac footpath heading west along the top edge of the Green passing between the village hall on your left and the school on your right, and then between fenced gardens on either side. After about 100 yards, you cross a stile and continue straight ahead along the side of the uncultivated field. Going gently downhill, continue for about half a mile, keeping not far from the hedgerow on your right until, you arrive at a stream bordered by trees. Bearing to the left, in two hundred yards or so, you reach the junction with the same bridleway that you walked along earlier, on your way from Dalscote to Gayton. Go right on the bridleway, down a steep slope to the wide wooden bridge over the stream that you crossed earlier. Cross the bridge and continue straight ahead on the bridleway, uphill across the field. Over the brow, you reach the beginning of a lane, about 300 yards from the stream. The lane, (unpaved) climbs gently uphill for about a half mile, before arriving at Anna's Lane in Dalscote. Go right on the lane and follow it out to the road through Dalscote.





Turn right and at the road junction go left and follow the road to Eastcote. Continue along Birds Hill Road towards Pattishall. Cross School Road and take the footpath to the right of the school. Go up a few steps and follow a narrow footpath between the school and a house. Go over a stile into a field. Cross the field to a stile and follow the right edge of the next field to another stile. Go straight ahead over the next field to a gap in the hedge and cross the next field to the A5. Go right on the pavement to Banbury Lane. Cross the A5 and walk up Banbury Lane and back to Cold Higham Church.



Footpath from Bird's Hill to Waites Farm and from Waites Farm to the Close, Eastcote



Bridleway bridge at Dalscote/Gayton boundary and on the bridleway, looking towards Dalscote.