

GAYTON NEWS – DECEMBER 2021



Issue 154



Lois Shaw died peacefully aged 91 on October 9th in Collingtree Park Care Home, where she had resided since April 30th 2018. She was cremated on October 28th with no funeral, as I intend to arrange a Celebration Occasion, probably in the Spring.

We moved to Gayton in June 1982 and Lois loved the village from the beginning and, over the years, got to know and befriend many of the residents.

She gave much support to the Gayton Church Heritage Trust and The Gayton Jazz Appreciation Society, helping to raise considerable funds for the church.

She was co-editor of Gayton News for 17 years. I wish to thank all of those who telephoned, sent emails and some lovely sympathy cards, the wording on which demonstrated how much Lois was loved and appreciated.

Many thanks, John Shaw

NEIGHBOURHOOD WATCH

The Neighbourhood Watch needs volunteers to be street wardens for the following roads. Back Lane, Bugbrooke Road, Banbury Lane & Flitnells Farm, Blisworth Road & Hillcrest Road.

Street wardens are a point of contact, acting as a link between the community and the NHW coordinator. If you would like more information or wish to join the Gayton NHW scheme please contact Richard Akers. rjakers@hotmail.co.uk or 01604 859813.

The NHW helps to keep the village safe with regular updates from the SCT (South Northants Community Team) and regular information from the Police.

Non-emergency incidents or crimes should be reported by telephoning 101, there is also a 'Do It Online' section on the Northamptonshire Police website www.northants.police.uk. Emergencies must be reported by dialling 999. As some of you have been doing, please report anything suspicious either via the direct channels if it is urgent or by emailing myself, and especially anything suspicious in the evening / night time hours.



*Do you want to help the environment
and save food from waste?*

...

Do you like a bargain?

...

*Would you like to be involved in a
community-driven project?*

Look no further... Come and join

YOUR COMMUNITY LARDER

Towcester Thursdays 10.00-11.00am

Towcester Town Football Supporters Club,
19 Islington Road, Towcester, NN12 6AU

• **Roade** Mondays 1.30-2.30pm
• Roade Village Hall, Bailey Brooks Lane,
• Roade, Northampton NN7 2LS



TowFood Larder membership provides access to surplus groceries (store cupboard items and fruit and vegetables) at heavily subsidised rates.

Bring your own bags!

To join, visit www.towfood.org.uk and click on 'Join the Larder', or call us to have the sign-up form posted to you.

- Annual joining fee: £10
- £4 for 10 / £8 for 22 products (subscribed members)
- £5 for 10 / £10 for 22 products (pay-as-you-go members)

We are open to **EVERYONE** who wants to **prevent food waste** and **save money**.



www.towfood.org.uk

team@towfood.org.uk • 01327 636982
facebook/towcestercommunityfood

TowFood - your community larder

Do you want to help the environment and save food from waste? Do you like a bargain? Would you like to be involved in a community-driven project? Then look no further... COME AND JOIN OUR COMMUNITY LARDER! Our vision is to continue to reduce food waste and make a positive impact on the environment. We also want to support our communities with affordable food, available to EVERYONE. If you become a member, you will be able to access our Larder to select the items you would like for a heavily reduced fee compared to the supermarket. Delivery is available (subject to agreement). The main Larder session is on a Thursday from 10-11am. You can join during the session or by completing the form on our website.

Venue: TTFSC, 19 Islington Road NN12 6AU (opposite Towcester Primary).

Please note that the Towcester Community Fridge will remain free and open to everyone.

Please see full details on our website <https://www.towfood.org.uk/larder> or Facebook page [ww.facebook.com/towcestercommunitylarder](https://www.facebook.com/towcestercommunitylarder)



Dear Friends in Gayton

With this message we would like to wish all our friends in Gayton a **Merry Christmas** and a **Happy and Healthy New Year**.

Instead of delivering individual Christmas cards to you, we will, once again, be making a donation to Gayton Church Heritage Trust.

Jens & Manja, 6 Baker Street

Litter Pick

A very big thank you to every one who volunteered and picked litter and numerous other discarded items from the hedgerows around our village. It was again most successful. We plan to hold another litter pick from Saturday 2nd to Sunday 10th April.

The next edition of the Gayton News will be at the end of March. If you would like something included please email me by Friday 25 March 2022.

Thank you very much to everyone who has sent contributions and thank you to all those who deliver it out to the village.

Wishing everyone a Merry Christmas and Happy New Year

The Industrial Solar Scheme

In September, the Secretary of State confirmed support for the decision of our Local Authority, West Northamptonshire Council, and upheld the requirement for Anesco to complete an Environmental Impact Assessment (EIA). Anesco have now carried out what they claim to be a full EIA and have submitted a planning application for the 170-acre industrial solar scheme. All residents can make their opinion and comments known. Either log onto the WNC Planning Portal at:- <http://snc.planning-register.co.uk/plandisp.aspx?recno=112162>

or write directly to the Planning Officers at:-

Samuel Dix

West Northamptonshire Council

South Northamptonshire Area Office, The Forum Moat Lane, Towcester, Northants NN12 6AD

You should quote application number WNS/2021/1858/EIA

Note – residents comments need to be submitted before 25 November 2021. This is reaching you slightly after the 25th. PLEASE DO STILL SUBMIT YOUR COMMENTS IF YOU HAVENT ALREADY

Gayton Parish Council is a formal consultee and will be submitting comments. We know the Parish Council continue to support both Central Government's and West Northamptonshire Council's sustainability and renewable energy initiatives. However, the proposed location for this massive industrial installation is inappropriate, covering large areas of good quality, productive arable land adjacent to the Village boundary and in close proximity to our historic conservation areas.

There are a number of issues which must be raised with the Planning Officers; these are:-

Loss of Productive Arable Land

Impact on the Landscape

Loss of Open Field Wildlife Habitats and Ecology Impact

Impact on the Gayton Conservation Area

Impact on the Grand Union Canal Conservation Area

Undermining of Local Tenant Farm Businesses and Employment

Impact on Local Tourist Business's

Noise Generation Impact

Cumulative Development Impact

Traffic Impact on Highway Network and Local Villages

Temporary Use with Undefined Reinstatement

If you want to share information or thoughts on any of the above, please email at:-

stopindustrialsolar@btinternet.com

We would urge Villagers to make their comments known as soon as possible to the WNC Officers as noted above.

Thanks for reading



Foodbank update

Thank you to everyone who has supported the Foodbank. After two years of service and an incredible 886kg of donations, the donation point has been damaged beyond repair and the village donation point is now out of action. Please continue making your donations at the usual points in Towcester at Tesco, Waitrose, or Co-op.

Your donations make such a difference to the people and families who need them.

As we go into Christmas, the current 'most in need' items

are: Tinned carrots, peas & sweetcorn, Tinned fruit (except peaches). Tinned meats, e.g., stews, meatballs, corned beef, salmon, or large tin of ham. Rice 500g or 1kg. Toiletries – Deodorants, Razors and shaving gel, Toothpaste and brushes. **Christmas items for inclusion in hampers for our clients:** Xmas puddings of all sizes, Small Christmas cake or slice. Biscuit selection boxes, Savoury crackers (e.g., Ritz, Tuc, etc.) Tubs or boxes of Chocolates, Selection packs for children. Stollen or Yule logs etc., Xmas novelties, e.g., choc Santa's, gingerbread men. Stacking crisps (e.g., Pringles) or pretzels, Matchmakers, After 8s or similar small chocolates. PLEASE DO NOT DONATE PRODUCTS CONTAINING ALCOHOL.

With the hugest of thanks and best wishes to you and your family,
Sami

The Foodbank continues to support all those who need it. Please call or text 07724832043 or email Towcester Foodbank at info@towcester.foodbank.org.uk

You can also contact WNC Money Advice team on 01327322275 during office hours.

GAYTON WALKERS

We continue to meet on the 2nd Sunday of the month at 10am at Fiveways. Please join us for a walk of about 4-5 miles usually starting from a pub nearby. We organise lifts and welcome well behaved dogs. Our lively Norfolk Terrier, Molly, welcomes someone to walk with!

In October we walked from Blisworth following the canal towards Shutlanger. We turned back noting the airshafts of the Blisworth tunnel.

In November we went from The Sun Inn, Kislingbury under the M1 motorway to Heygates Mill and on to Bugbrooke. We circled back to Kislingbury for a well-earned drink at The Sun. Both walks took about 2 hrs, were flat and firm under foot.

There will be another walk on Sunday 12th December organised by Colin Simmonds. Meet at Fiveways at 10am. There will be the usual New Year's Day walk meeting at 11am (not 10am) at Fiveways crossroads for a shorter 1 hr walk locally. Do join us with friends, family or visitors that may be staying. It will do you good!

Robin Kelso robin.kelso@btinternet.com

Gayton C of E Primary School

It was wonderful to welcome our children back to school in September.

Our new reception children have thoroughly enjoyed getting to know both our school and our wonderful village. We have enjoyed many visits to the Pocket Park, where children have enjoyed learning about the plants and animals that live in our village. We are also looking forward to making our way back to the Church's wildlife, where we examined the plants, insects and animals there – we wonder if grounds looks different now compared to the summer months?

In October, we had our first whole school visit to the church in almost 2 years! We celebrated Harvest Festival with all of our school community, performing songs and sharing work completed in school. It was magical!

As we approach December, we cannot wait to perform our nativity in the church. Working closely with Reverend Karen, we have organised something extra special for the village to enjoy. Unfortunately, we will not be delivering Christmas cards to the village this year, due to cross-contamination. But, let us take this opportunity to wish you all a very happy Christmas and healthy new year, from all of our Gayton school family.

CHAIN GANG

The volunteer Chain Gang are continuing to clear footpaths, repair stiles etc. I would welcome any reports of jobs that need attention and also anyone who would like to help join the gang. The work is not difficult, lasts no more than 2 hrs and includes a coffee break with a biscuit!

Robin Kelso robin.kelso@btinternet.com

Waste and recycling collections this Christmas and New Year

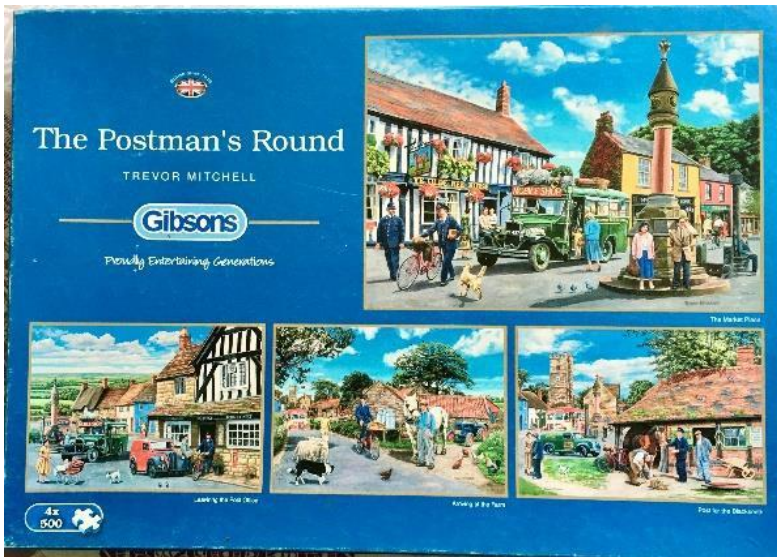
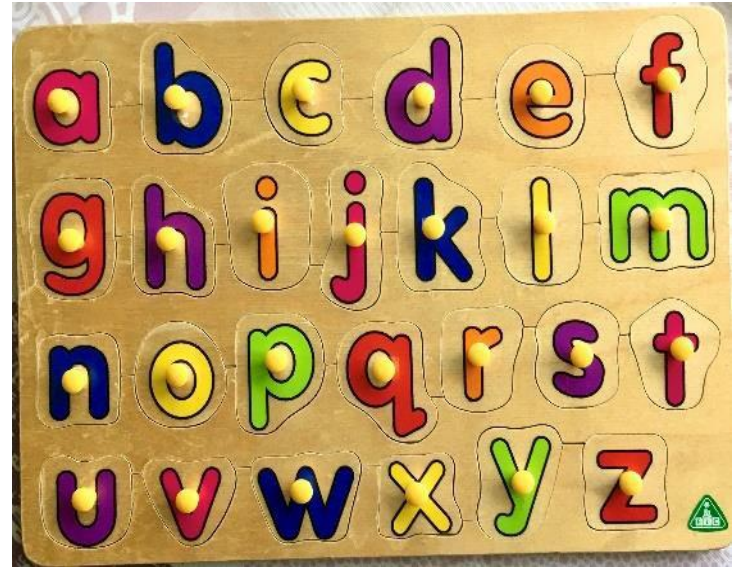
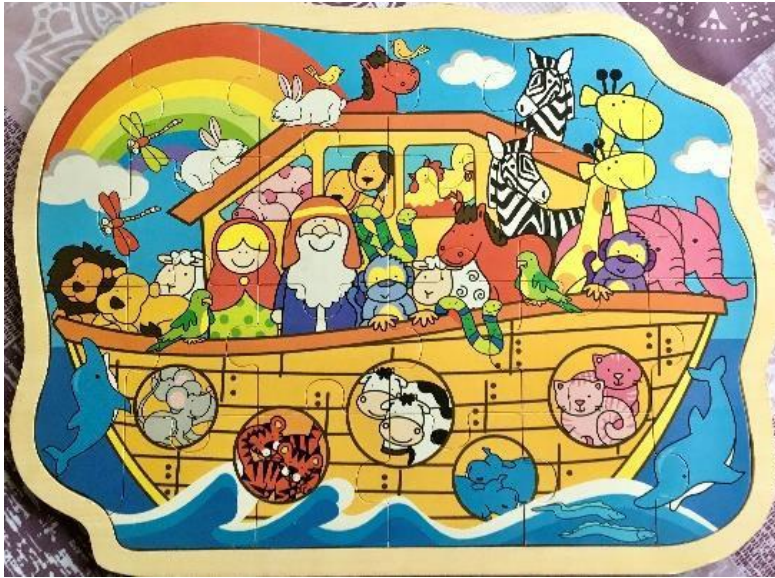
Because Christmas Day, Boxing Day and New Year's Day all fall on a weekend, waste and recycling collection days will not change during the period, though garden waste collections will be suspended from 27 December to 7 January.

Residents will be able to present extra recycling alongside their bins in clear sacks or in additional boxes. Additional recycling can also be taken to Household Waste Recycling Centres, which will open as normal except for Christmas Day, Boxing Day and New Year's Day, when they will be closed, and Christmas Eve when they will close early at 2pm.

Real Christmas trees will be collected on the weeks beginning with 10 and 17 January. Place your tree next to your garden waste bin. To help collection crews, people are asked to ensure that trees over 6ft tall are cut up into manageable pieces. People are encouraged to check their collection arrangements by visiting the Council's website or by downloading the relevant Council app for their smartphone.

New waste and recycling collection dates have also now been confirmed for the year ahead and residents will be able to download their calendar at www.westnorthants.gov.uk/bincollections
More information can be found at www.westnorthants.gov.uk/waste

Gayton Jigsaw Puzzle Exchange Mid winter is here, daylight hours are few and jigsaw puzzling is in season! Thanks to several generous donors, we now have a large and varied range to offer, for all ages from 2 to 100+. We have a few charming alphabet and picture puzzles for infants and in adult puzzles we have 500, 1000, 1500 and 2000 pieces and a wide variety of themes. In all we have around 40 puzzles, far too many to list or illustrate here, but here are a few to wet the appetite.



All donations go to the Gayton Alms Charity Educational Foundation and we suggest £1 per 500 pieces for adult puzzles and £1 each for children's puzzles. If you would like to come and browse our puzzle pile in the garage give us a call to arrange a time. Wendy and Barry Steer 858886

COMPOST

From April 2022, the free green waste collection we currently enjoy will be replaced by a system requiring an annual payment of £42. There will also be a home composting scheme for anyone wanting an alternative but the details of that have not been made available yet.

Regardless of local authority initiatives, I believe home composting should be encouraged and with that in mind here are a few notes you may find useful.

Let's start by asking if we can make good compost at home?

The answer is that with a little basic knowledge we can. Let's start with a look at the science behind the composting process.

To get started we need two things, green stuff and brown stuff. The green provides nitrogen that helps micro-organisms multiply and heat the compost heap and the brown provides the carbon they feed on and adds bulk. Mix the two in a ratio of about one part green to four brown, add a drop of water and some oxygen (from the atmosphere) and composting begins. You may have read that the ratio of nitrogen and carbon should be 1 to 30 but don't be confused, that applies to the chemical composition of good compost, not the amounts of raw material.

The Greens

Grass cuttings, Coffee grounds, Vegetable trimmings, Annual weeds (leave out the seeds), Seaweed (chance would be a fine thing), Eggshells (washed to deter rodents), Animal manure (not dogs and cats)

The Browns

Straw, Paper, Cardboard, Fine wood chip, Sawdust, Twigs, Autumn leaves

If you have space (like an allotment) to make large heaps, you can leave the mix for twelve months or more and let nature take its course. If you are working in a small garden, some form of compost container helps, there are many types available including a rotating composter to take the hard work out of turning your mix. This speeds up the process because to form compost quickly it is essential to turn it regularly to allow oxygen into the mix, at least once a week is recommended by most experts.

At this point you may well ask why I don't just pop to the garden centre and buy a few bags? Well, I have done in the past, but I will think long and hard about what I do in the future. We are all aware of the damage that has been done to ancient peat bogs and the environment around them just to provide us with a convenient source of compost. Peat takes millennia to form from rotting organic matter so once it's gone, it's gone.

We could of course buy peat free compost. This is made on an industrial scale using a process to speed up nature. Unfortunately, it's then packed in plastic bags (which aren't always recyclable) and transported by road, not great for our environment. In my own experience I have also found it to be of indifferent quality with large pieces of wood etc that have to be sieved out before use.

So, from a personnel perspective I believe that any compost I can make, regardless of how little, has got to be a good thing.



One final tip, once you've made your compost, and you want to start a new bed for flowers, veg or fruit, you could try the no dig method, break up some cardboard boxes over your chosen area, it can go over grass or annual weeds, and bury it in a 2-to-4-inch layer of your homemade compost. You can then plant direct into that layer.

The following extract from an article in the Guardian by Carlyne Fry may also be of interest.

You may think there's little difference between sending your organic waste to a landfill site to rot and putting it in a compost box to decompose in the garden. However, waste broken down in landfill sites produces harmful greenhouse gas emissions, whereas that decomposed by composting does not.

This is because waste sent to landfill breaks down anaerobically - that is, without any oxygen present. It is squashed down then capped with soil and clay so it fits into a confined space and doesn't smell. As the rubbish breaks down over time, it emits methane, a greenhouse gas that is 21 times more powerful than CO₂.

Organic waste placed in a compost bin in the garden rots in the presence of oxygen. Microbes, fungi, insects and worms slowly decompose the rubbish into a sustainable source of compost that can be used in the garden. If a quarter of us switched from dumping organic waste in landfill sites to composting it, we'd save the equivalent of 2.5m tonnes of CO₂ from reaching the atmosphere each year.

So, let's do our bit for the environment by making as much of our own compost as we can and save a few pennies in the process, and if my short article has stirred your interest, there is a lot more information online.

Happy decomposing, Carl

The Eykyn Arms

News and Events

As you may have already heard, we have had some exciting news about the Eykyn Arms; a prosecco reception was held to celebrate that Karem McArthur and John Gould have recently taken on the lease and have continued their already fantastic work in re-invigorating the pub with increased enthusiasm!



I am unashamedly promoting the pub, but please forgive me; I have no business involvement in the pub, but I do value it very highly as a Community Asset!

On that note, I was disappointed that the ACV re-listing with Northamptonshire Council was initially granted but then withdrawn after appeal, but realistically that isn't a huge drawback as pubs now enjoy far greater planning protection than they did a few years ago.

The main reasons why the appeal was successful was due to quite a lot of critical comments, returned in the Pub Community Survey, regarding poor appearance and offerings of the pub. Whilst genuine, they reflect a much earlier period than now! This indicated a lack of community support and so the listing was removed.

All of those points in the survey have been recognised and very successfully addressed by Karen and John, ably assisted by an astonishing amount of volunteer community work, both during the lockdown and ongoing.

Specifically, the closed period allowed a thorough cleaning of the pub and repainting and modernising of the interior, to include lighter paintwork, modern lighting and less cluttered interior.

Better, regular opening times have been set and you can also be assured of a warm and friendly welcome, both personally and indeed, temperature-wise, as the heating works much better now!

A more extensive and better quality of drinks has been obtained which includes regularly changing, good quality, Real Ales. I have particularly enjoyed both the Phipps ales and the Roman Way Brewery's various ales, always served in tip top condition!

A range of events and activities have been established through the week; Friday Bingo is always very popular and enjoyed by families, and a professionally hosted Karaoke on Saturdays has been a lively and thoroughly enjoyable experience for all concerned! These are both held in the back bar, which still leaves the front bar free for a quiet drink.

An enjoyable Wednesday Quiz night was held in November and further ones are scheduled in December and potentially ongoing. I am also very excited that Live Music has started with the band "Somewhat Afflicted" playing a classic rock covers gig.

A popular "Bonus Ball" draw and Meat Raffle are run and a Coffee Morning is held every Wednesday morning from 9.30 till 11am. Live Broadcast supporting events are also a popular opportunity to gather, with upcoming England games scheduled.

Also, I think we should thank Karen and John for running the bar at the recent, very successful, Halloween party in the Village Hall.

Further work is still needed, both due to the age of the building and the lack of attention it has previously suffered from. So, whilst the pub has some way to go, to get back to its "heyday", this can only be achieved with the support of the village. Karen and John are both very open to suggestions for activities and the hear "what you want" from the pub.

I suggest you make it a priority to visit the "new, revitalised" Eykyn Arms at your earliest convenience.

Regards, Colin Simmonds

'THE EYKYN ARMS' - NOW UNDER NEW LOCAL MANAGEMENT

Karen and John as of November 1st have taken over the Eykyn, we are now open every day, except Mondays (exc BH Mondays)

Times being:

Monday – Closed. **Tuesday** – 12 noon to 3pm & 5pm to 11pm

Wednesday – COFFEE MORNING 9.30am to 11am. 12 noon to 3pm & 5pm to 11pm

Thursday – 12 noon to 3pm & 5pm – 11:30pm

Friday – 12 noon to 3pm & 5pm – 11:30pm

Saturday – 12 noon to 5pm & 7pm – 11:30pm

Sunday – 12 noon to 4pm & 7pm to 10:30pm

BINGO EVERY FRIDAY FROM 8 PM {APPROX}

QUIZ NIGHT 1ST DECEMBER THEN EVERY FORTNIGHT { 8PM START}

LOOK OUT FOR UPCOMING EVENTS ON SATURDAYS

WE ADVERTISE WITH A BOARD OUTSIDE THE PUB, ON OUR FACEBOOK PAGE AND INSTAGRAM (THE EYKYN ARMS), DETAILING UPCOMING EVENTS

EVERYONES WELCOME - HOPE TO SEE YOU SOON